



FL55 HiGlory

180lm/W LED Floodlight with asy optics
Cost-effective, superior performance,
elegant appearance



180 lm/w



IP66



IK08



5
YEARS
Warranty



Quick
installation



Easy
adjustment



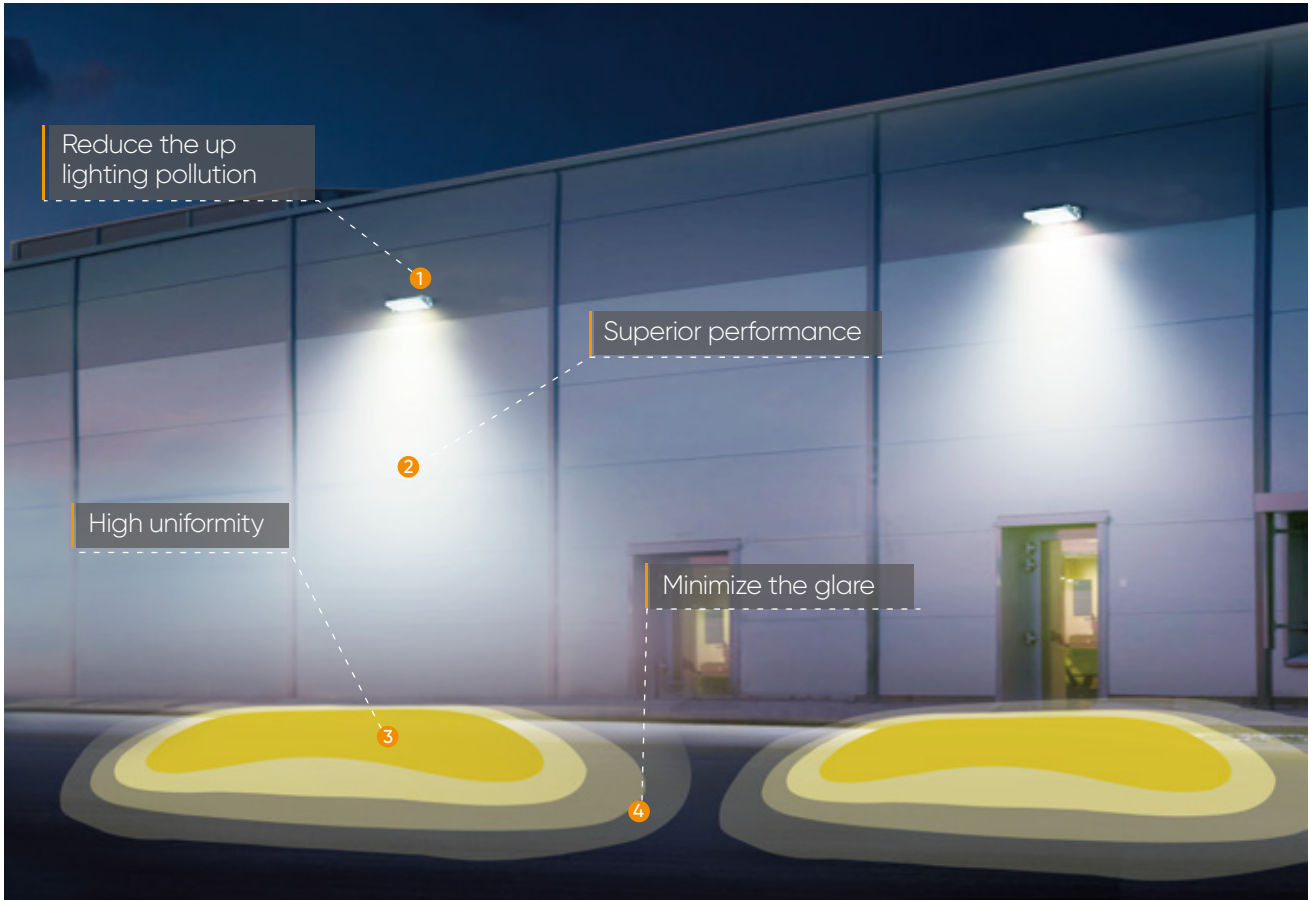
Minimal
maintenance



-30°C to +45°C

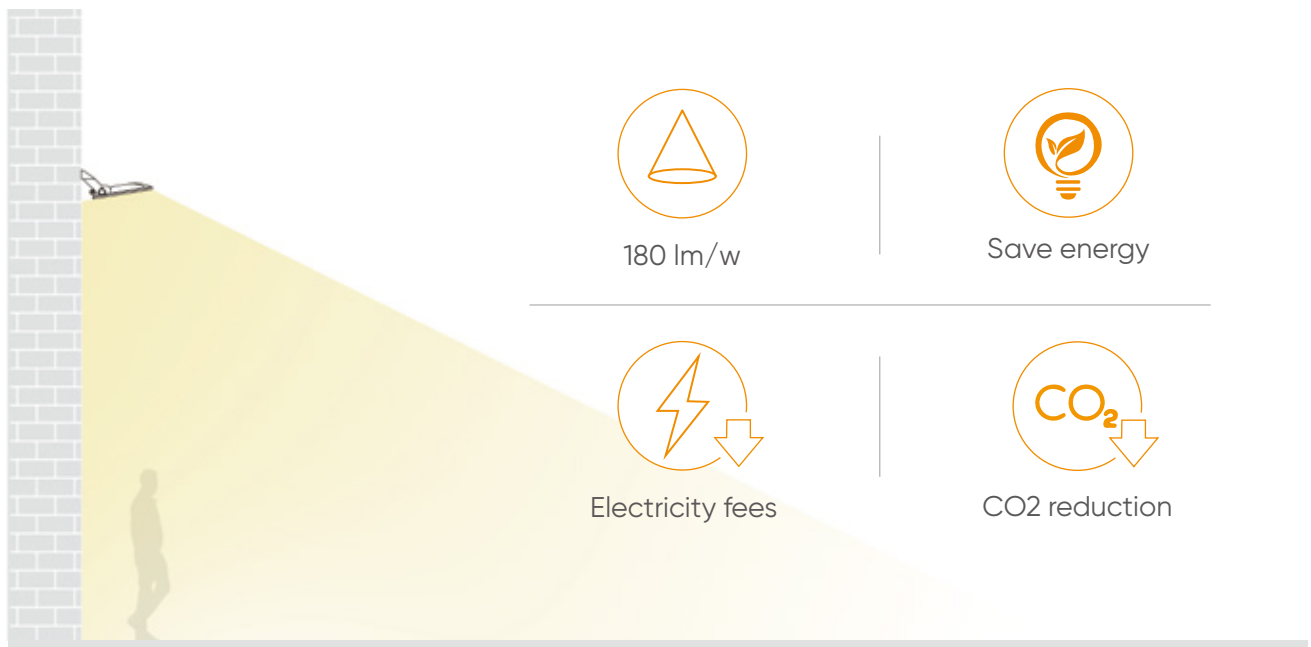
Outstanding Asymmetrical Optic

It is not easy to achieve 180lm/W high-lumen output while using asymmetrical optic. FL55 overcome the challenge and is combined well with asymmetrical optic.



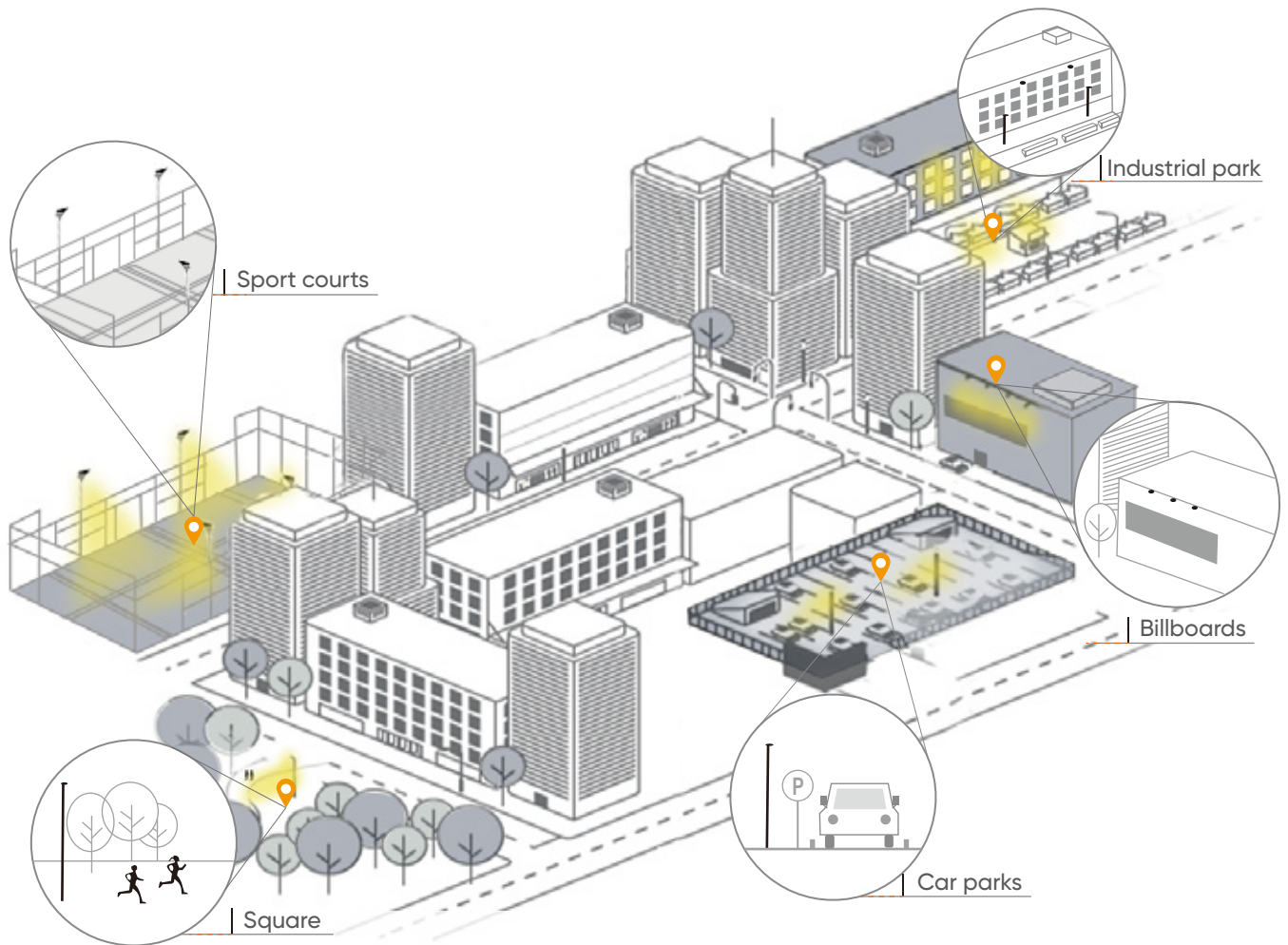
High Energy Savings

Energy-efficient lighting helps lower electricity bills and carbon dioxide emissions, without sacrificing the quality of light in applications.



Environmentally friendly

Choosing the right optic can bring a comfortable illumination environment and reduce spilled lighting bothering to the neighborhood.



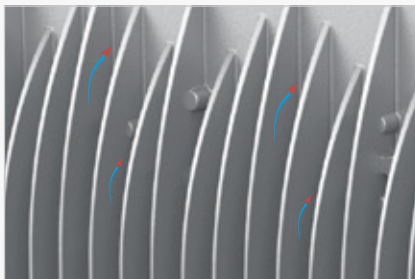
50W to 300W Full Power Range

5 different sizes to control the cost to the best



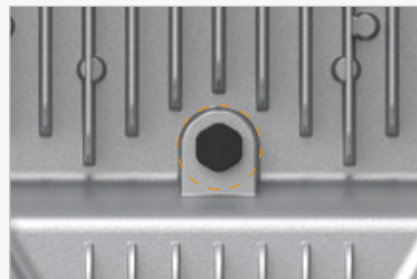
Optimized Design

With compact design, FL55 focus on details to make sure stable performance and easy operation.



Cooling fins

Thermal management well



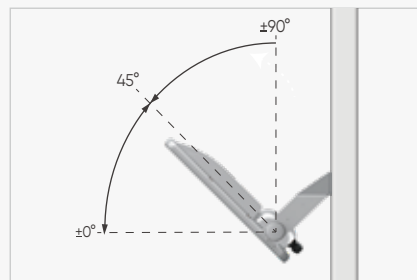
Vent design

Avoid fogging and frosting



Bent bracket

Easy and quick installation



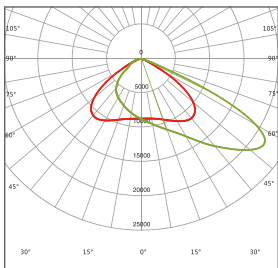
Easy adjustment

+/- 90deg adjustable

FL55 Product Range

Model No	FL55-050	FL55-100	FL55-150	FL55-200	FL55-240	FL55-300
Power Consumption(±5%)	50W	100W	150W	200W	240W	300W
Input Voltage	100-240 Vac, 50 / 60 Hz					
Luminous Flux (±10%)	9000lm	18000lm	27000lm	36000lm	43200lm	54000lm
Product Dimension	343.5×269×65mm	389.2×317×65mm	419.2×349×65mm	458.6×387×65mm	498.7×441×70mm	
Luminaire Net Weight(±0.3kg)	1.97kg	3.2kg	3.8kg	4.7kg	5.82kg	5.9kg
Export Carton Size	375×310×100mm	420×360×95mm	460×390×100mm	500×435×100mm	545×490×105mm	
Gross Weight(±0.3kg)	2.8kg	4.2kg	5.2kg	6.2kg	7.6kg	7.7kg
Efficacy(4000K Ra70)	180lm/W					
CCT & CRI	4000K (5000K optional),Ra70 (Ra80 optional)					
Beam Angle	F16001	F28001	F41201	F56801	F80901	
Operating Temperature	-30°C to + 45°C (-22°F to 113°F)					
Protection Rating	IP66,IK08					
Warranty	5 Years					

Photometric Diagrams



F16001/F28001/F41201/F56801/F80901
(25 X 125°)

Mounting Options



U Bracket Mounting



Pole Mounting



Clamp bracket



Outrigger mounting