



# ST53 LED Street Light

Classic but different design  
makes your product recognizable



160lm/W



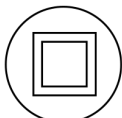
IP66



IK10



Class I



Class II



20-180W







## Upgraded structure design

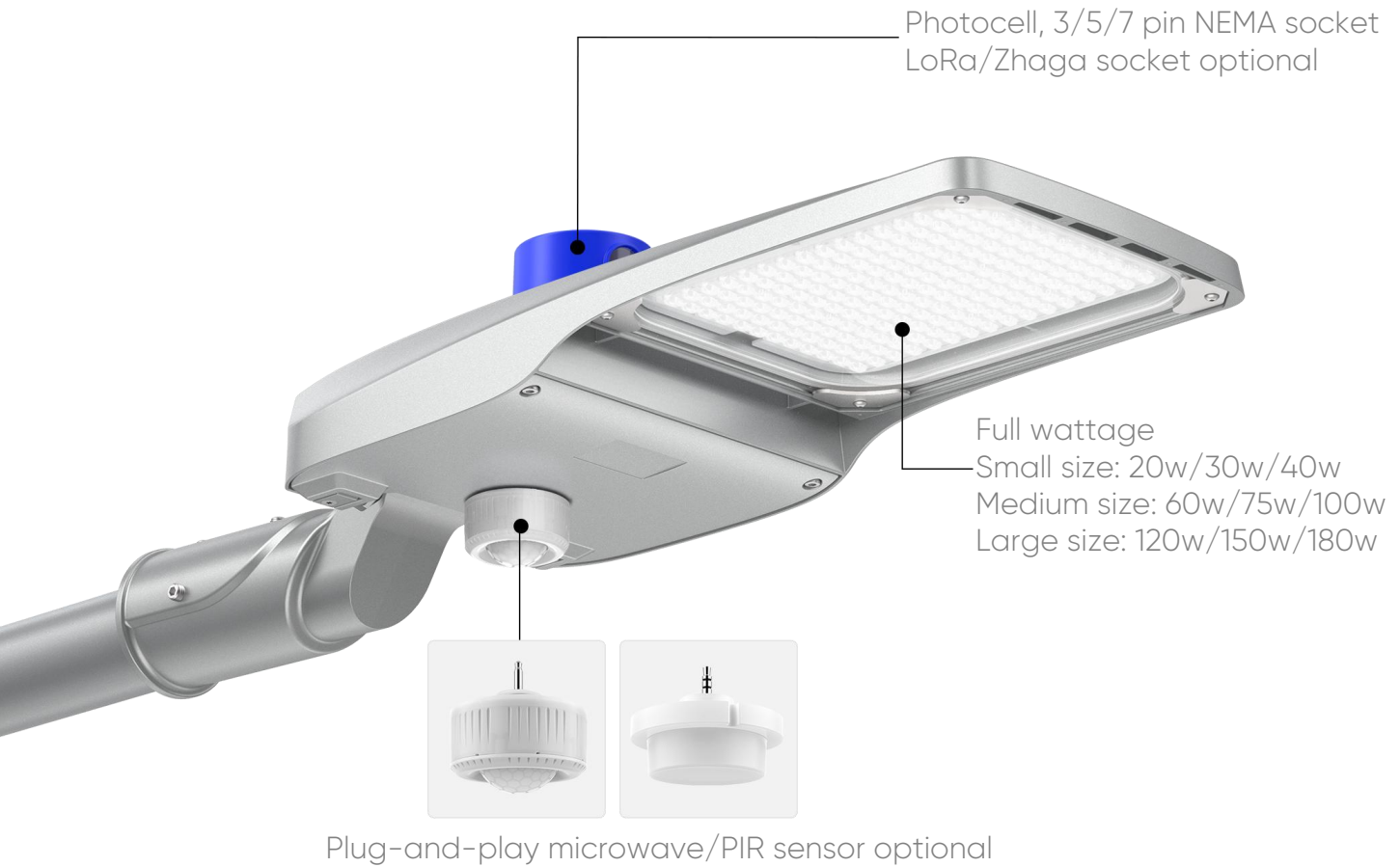
Innovative design separates LED module from driver chamber, enhances the air convection and therefore brings excellent heat dissipation performance

Smooth surface avoids accumulation of dust, sand, leaves, water and snow



It's easy to maintain by loosening two screws of the bottom cover

# Smart control for more energy saving



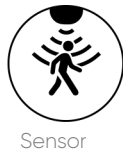
NEMA



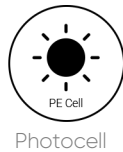
LoRa



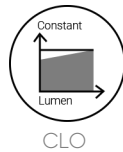
Zhaga



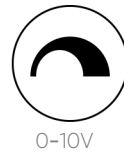
Sensor



Photocell



CLO



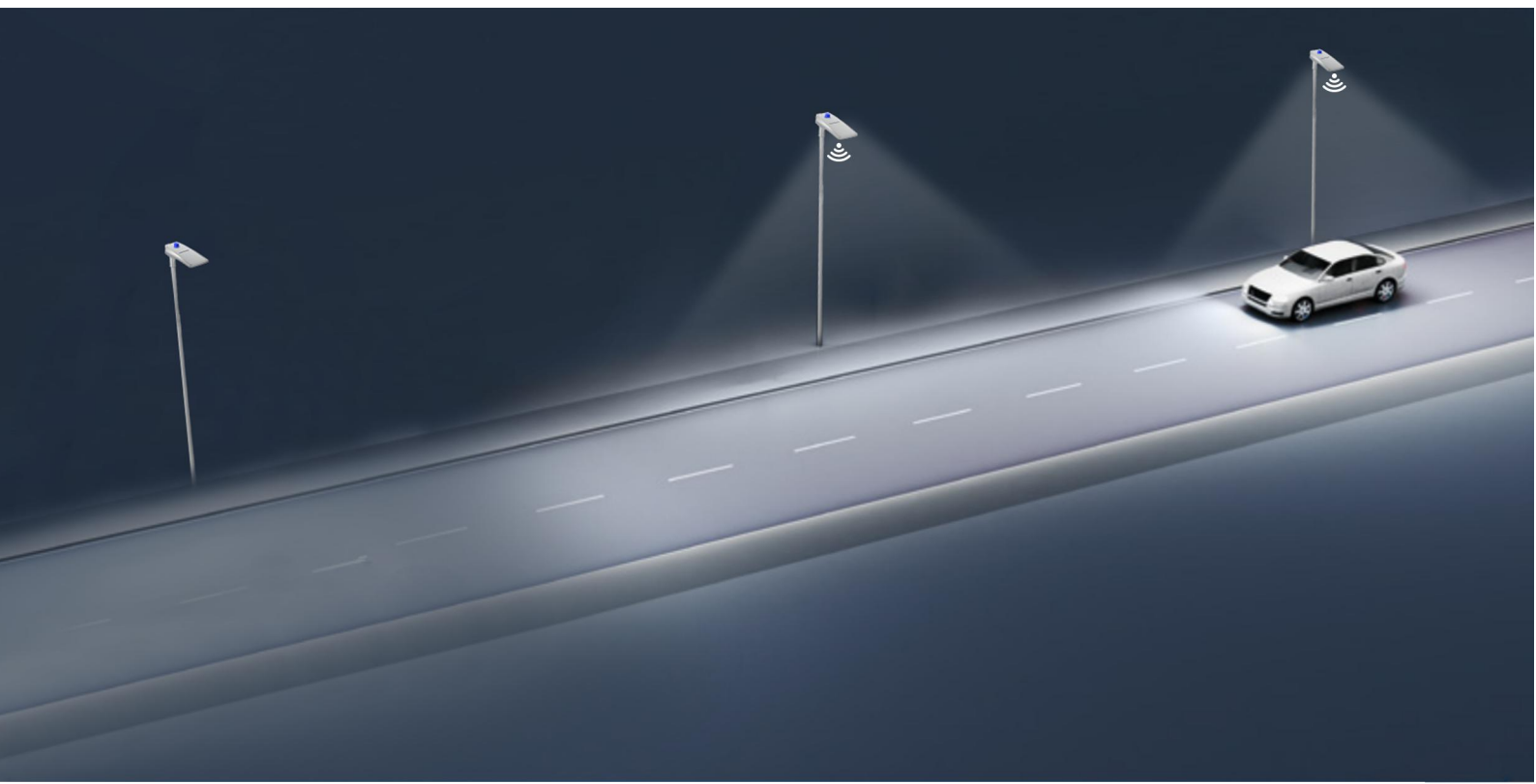
0-10V



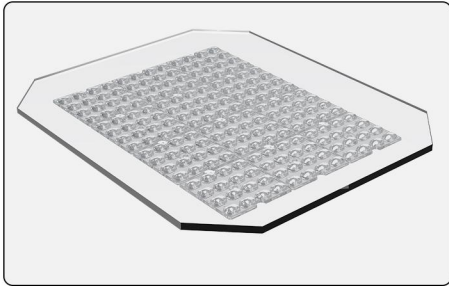
Timer dimming



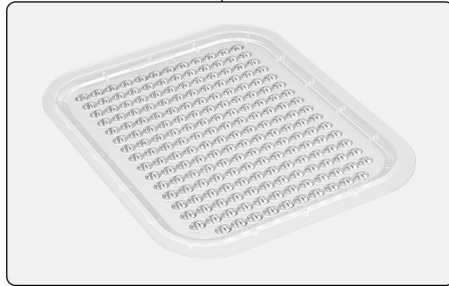
DALI



# Flexible solution



16-in-1 PC lens+tempered glass cover 160lm/W IK09

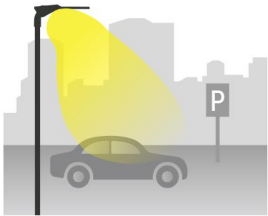


An integrated PC lens 165lm/W IK10

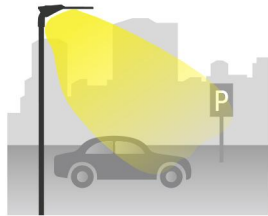
Light distribution type  
 R01601/R01602/R01603/R01604/R01605/R01606/R01607/R01609/R01610/R01611/R01603

20-40W: R09401/R09402/R09404  
 60-100W: R19001/R19002/R19004  
 120-180W: R31801/R31802/R31804

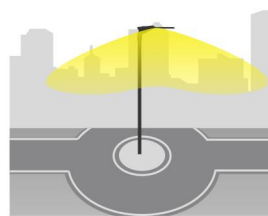
## Parking lot



R01603

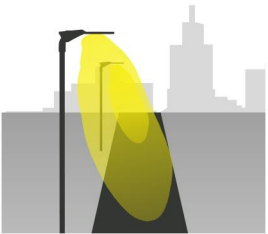


R01604

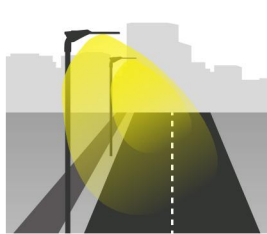


R01605

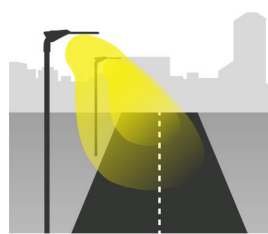
## Roads



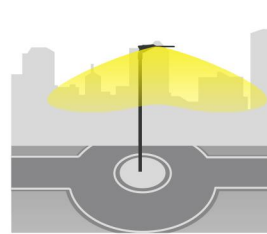
R01601



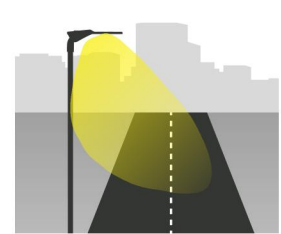
R01602



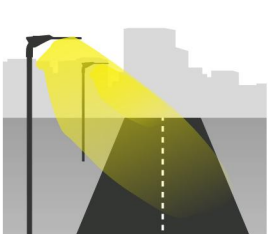
R01603



R01605



R01606



R01607



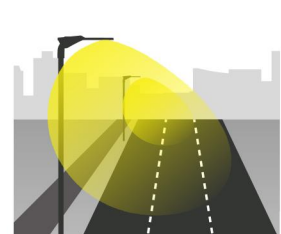
R01609



R01610



R01611



R01613



# ST53 Product Range

Model No	ST53-020	ST53-030	ST53-040	ST53-060	ST53-075	ST53-100	ST53-120	ST53-150	ST53-180
Power Consumption(±5%)	20W	30W	40W	60W	75W	100W	120W	150W	180W
Input Voltage	100-240 VAC / 220-240 VAC , 50 / 60 Hz								
Control	Dimmable, photocell, DALI, ZHAGA, microwave sensor, PIR sensor								
Luminous Flux (±10%)	3200 lm	4800 lm	6400 lm	9600 lm	12000 lm	16000 lm	19200 lm	24000 lm	28800 lm
Efficacy (4000K RA70)	160LM/W (Small PC lens+Glass)				165LM/W (One-piece PC lens)				
CCT & CRI	4000K (3000K, 5000K optional), Ra70 (Ra80 optional)								
Beam Angle	<p><b>16-in-1 PC lens+tempered glass cover:</b> R01601,R01602,R01603,R01604,R01605,R01606,R01607,R01609,R01610,R01611,R01613</p> <p><b>An integrated PC lens:</b> 20-40W: R09401, R09402, R09404 60-100W: R19001, R19002, R19004 120-180W: R31801, R31802, R31804</p>								
Protection Rating	IP66, IK08/IK10								
Operating Temperature	Class I: -30°C to + 50°C			Class II: -30°C to + 40°C					
Warranty	5 years								

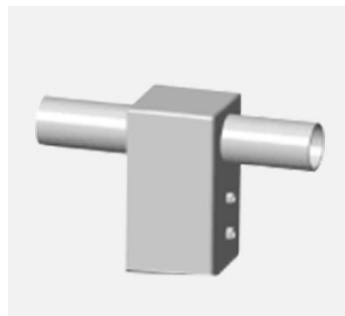
## Various mounting adaptors optional



L adaptor for dia 60mm pole



Spigot for pole (34/42/60/76mm optional)



2 lights adaptor for 100x100mm square pole



2 lights adaptor for dia 60mm/76mm pole



Adaptor for 100x100mm square pole



Adaptor for 90mm pole



Mounting adaptor for dia.60mm Spigot



Corner adaptor