

CE CB RoHS



ATHLETIC

Athletic is a cost-effective, lightweight, ultra-thin flood light that is at least 10% cheaper than similar options. It is commonly used in outdoor sports venues, swimming pools, industrial sites, logistics parks, car parks, outdoor billboards, road intersections, and architectural lighting.



180
Lm/W



IP66
Wet Location



IK08
Protection Provide

5 YEARS
WARRANTY



3-IN-1 CCT Seletable



3-IN-1 Wattage Seletable



kg 13

Reduced 50% weight
Only 13Kg, 500W/600W

Compare to Similar Flood Light, FL23 Cost Down $\geq 10\%$

3-in-1 CCT and Wattage Seletable Solutions

FL23 offers a 3-in-1 power and CCT adjustable solution, allowing for flexible application in various locations. *This versatility facilitates better stock distribution for customers, reducing the risk of inventory backlog.*

3-in-1 CCT Seletable » » 3000K-4000K-5000K

300: 150W-250W-300W

3-in-1 Watt Seletable » » 400: 200W-300W-400W

500: 300W-400W-500W

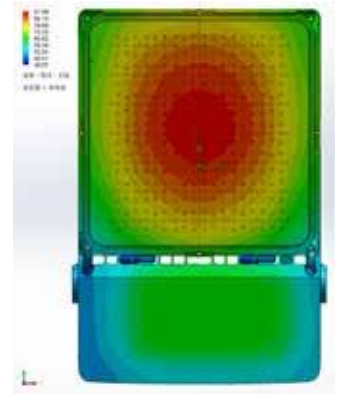
600: 400W-500W-600W

Up to 180Lm/W, Lens Customizable

Our flood light features high-efficiency LEDs (5050 or 2835) with excellent light output, low power consumption, and high temperature resistance. The maximum light efficiency reaches 180Lm/W, with options of 150Lm/W, 160Lm/W, and 170Lm/W, making it a cost-effective choice. The 8-in-1 or 6-in-1 modular lens reduces the mold cost significantly. Customization is also available for lens types beyond the 30°, 60°, 90°, and asymmetric options.

Good Heat Management

- ▶ The FL23 utilizes high thermal conductivity die-casting AL material, ensuring excellent thermal conductivity.
- ▶ The separate installation of the driver and LEDs prevents heat effects on the driver.
- ▶ The convective hole facilitates rapid heat dispersion, enhancing the overall heat dissipation and maintaining performance stability.



IP66 Dual Waterproof Reduce 10% Probability of Water Leakage

The driver cavity and LEDs cavity of FL23 are designed separately, allowing for independent waterproofing. This design reduces the leakage rate by 10% compared to integrated designs, improving stability and performance of the light.

Dual Breath Value Design

FL23 is equipped with metal breath valves in both the driver and LEDs cavities. These valves maintain a balanced airflow inside and outside the cavities, effectively preventing moisture mist from affecting the electrical components and reducing light attenuation caused by water mist on the luminous surface.

The metal sheet can be removable, without screws on the surface, and the appearance is complete.

Glass + Lens

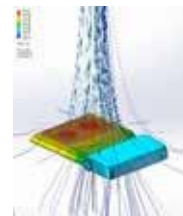
FL23 floodlight features a glass and lens combination for double protection, with anti-impact IK08 rating and high weather resistance. The glass shields the PC lens from UV rays, ensuring long-lasting high brightness illumination.

Robust Bracket with 5-Degree Tick Marks

The u-bracket that offers good adjustments using a 5-degree tick marks knob, providing precise control over the direction of light. This flexibility, combined with its adaptable light types that include both symmetry and asymmetry, ensures accurate illumination in desired positions. This makes the FL23 an optimal choice for customers who prioritize high construction precision.

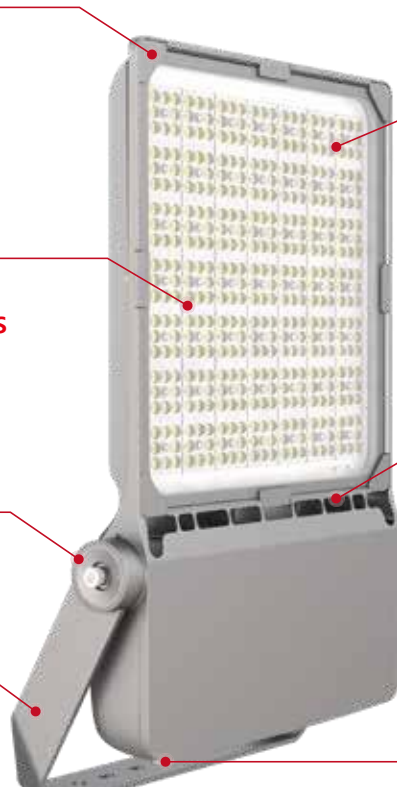
U-bracket is offers exceptional strength to withstand outdoor wind pressure, ensuring stability and reliability.

High light efficiency reaches up to 180Lm/W, with optional options of 150Lm/W, 160Lm/W, and 170Lm/W.



The convective hole facilitates rapid heat dispersion, enhancing the overall heat dissipation and maintaining performance stability.

The connection interfaces is reserved , DALI, 0-10V dimming optional.





Loop in/out Connection Available

We provide a dedicated port that facilitates easy loop in/out connection for multiple lights. This feature is particularly advantageous for lamp posts or areas that require multi-lighting, as it simplifies the wiring process and reduces wire costs. One flood light failure will not affect the operation of other lights, minimizing the impact of maintenance on site usage.

Input Voltage AC220-240V:					
Cable(mm ²)	Loop in/out Connection Quantity(pcs)				
	300W	400W	500W	600W	800W
1.0	4pcs	3pcs	3pcs	2pcs	2pcs
1.5	7pcs	5pcs	5pcs	3pcs	3pcs

NEMA and Zhaga Interfaces Available

NEMA and Zhaga interfaces are reserved to select appropriate smart control according to different regions and habits, such as NEMA + Photocell, PIR Sensor, PIR Sensor + Remote Control, etc. .

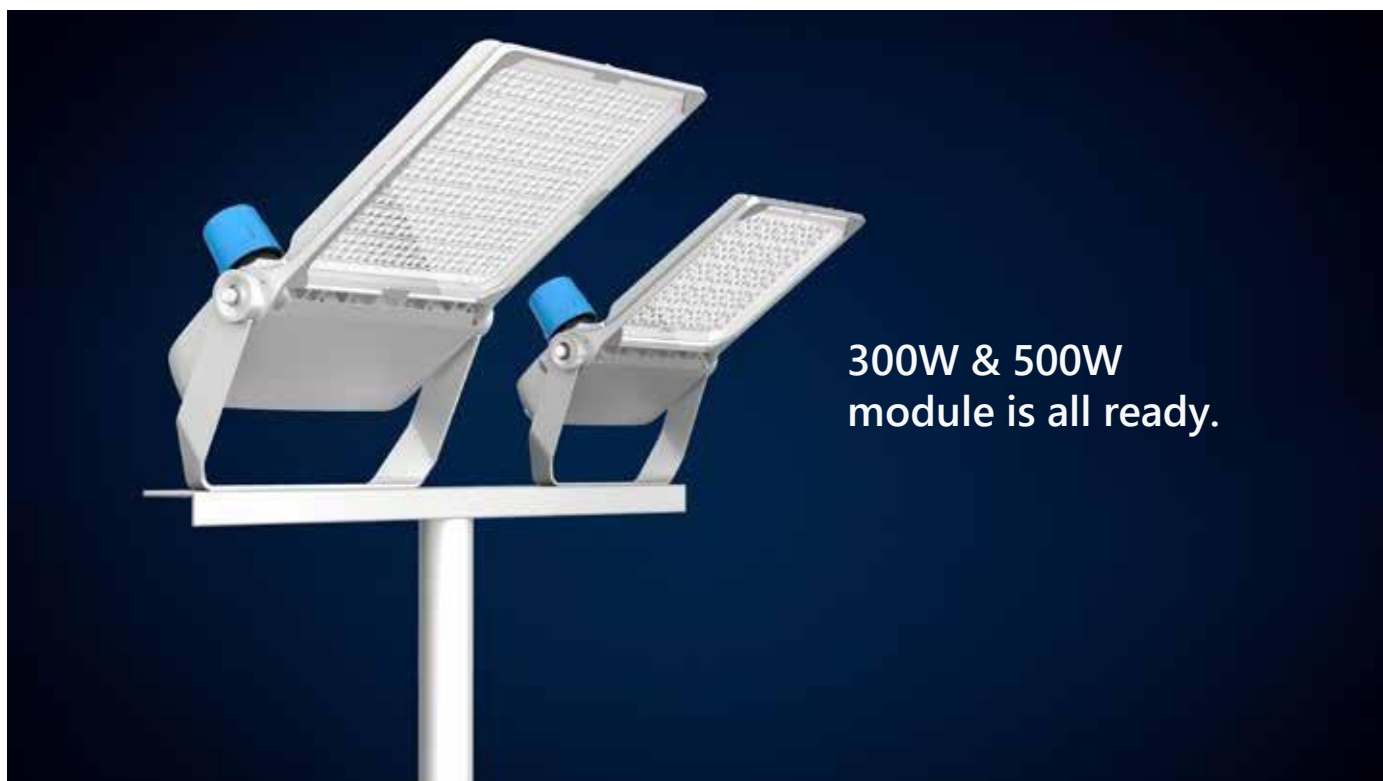
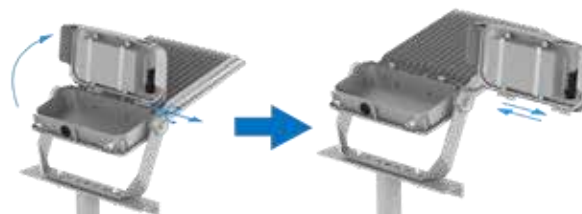


Both The Most Cost-Effective and The Longest Lifespan Options Are Available

- 1 The lowest cost option:** Driver installed in the power cavity, open the back cover to replace the driver, high cost-effective.



- 2 The most reliable and longest-lifespan option:** The driver installed in the back cover of the power cavity, block the main heat, power stability, lifespan can be 10% -30% longer than other solutions. It's convenient for later maintenance and only needs to replace the back cover and driver when operating at high altitude.





ONE OF THE MOST POPULAR FLOODLIGHTS AMONG AGENTS

The FL23's expandable power box cover ensures excellent performance and customizable aesthetics, meeting the needs of different agents in various regions and providing tailored solutions for specific customers.



Expandable dual module combination solution can replace 500-1000w high-power floodlights and stadium lights.

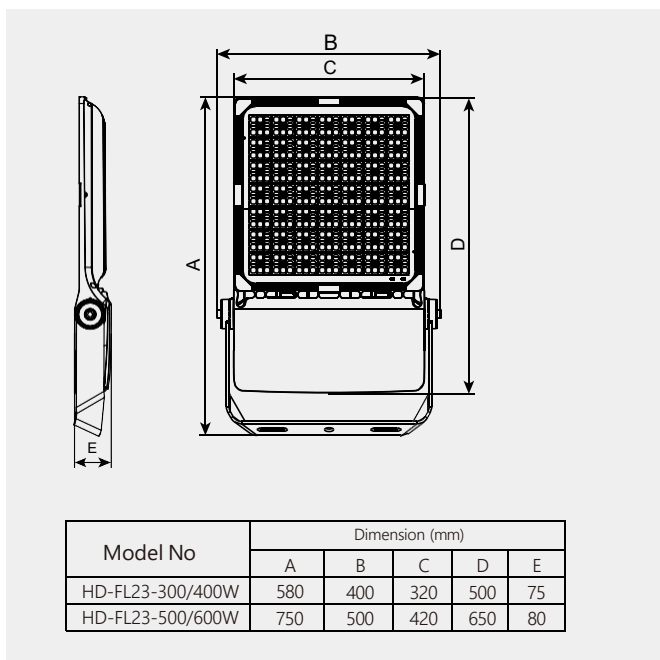




Parameters

Model No.	ATH-300W	ATH-400W	ATH-500W	ATH-600W
Wattage Seletable	150W-250W-300W	200W-300W-400W	300W-400W-500W	400W-500W-600W
Light Efficiency	180Lm/W, 170Lm/W, 160Lm/W, 150Lm/W Optional			
Lumen Output(@4000K)	22,500Lm~54,000Lm	30,000Lm~72,000Lm	45,000Lm~90,000Lm	60,000Lm~108,000Lm
CCT Seletable	3000K-4000K-5000K, 4000K-5000K-5700K			
Beam Angle	30°/60°/90°/asymmetric			
CRI	70 / 80 / 90 / TLCI86 / TLCI90			
SDCM	≤5			
Input Voltage	100-277VAC / 220-240VAC 50/60HZ			
Power Factor	≥0.90			
THD	≤10%			
Percent flicker(%)	<10%			
Surge Protection	6KV/10KV/20KV			
Protection against electric	Class I			
IP	IP66			
IK	IK08			
Operating Temp Ranger	-40°C~+50°C@ outdoor			
Intelligent control	0-10V Dimming, DALI2.0			
Lifetime	100, 000H(L70B50@25°C)			
Weight (kg)	7.5kg	7.5kg	13kg	13kg
Dimension(mm)	580*400*70	580*400*70	750*500*80	750*500*80
Warranty	5 years			
Certificate	CE / CB / RoHS			
Brand	LED Vendor: Lumileds Driver Vendor: Sosen, Inventronics(non-isolated / isolated)			
Material	Structure: Die-casting/ADC12 Finish: Powder coated Lens: Polycarbonate+Glass Color: Gray			

Dimension (mm)



Applications

Outdoor / Indoor / Industrial

- ▶ Sports & recreational fields
- ▶ Large-scale outdoor events
- ▶ Industrial and construction sites
- ▶ Parking lots and garages
- ▶ Landscaping and architectural lighting
- ▶ Security and outdoor surveillance



Tennis Court



Badminton Hall

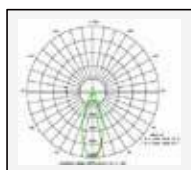


Swimming Pool



Parking Lot

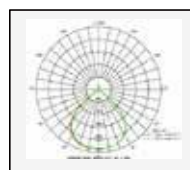
Photometric diagrams



30°



60°



90°



Asymmetric



Industrial & construction sites



Airport



Landscaping Lighting



Outdoor Surveillance



High Way Lighting



High Mast Lighting